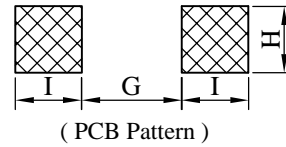
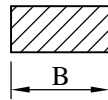
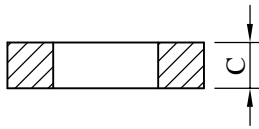
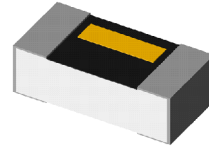
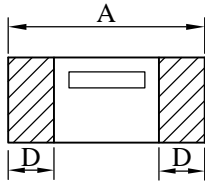


SPECIFICATION FOR APPROVAL

REF. :

PROD. NAME	Thin Film Chip Inductor	ABC'S DWG NO.		AL0603□□□□L□-□□□	
		REV.	20130610-B	PAGE	1

I . Configuration and dimensions :



Unit : m/m

A	B	C	D	G	H	I
0.60 ±0.05	0.30 ±0.05	0.23 ±0.05	0.15 ±0.05	0.30	0.30	0.25

II . Materials :

- a . Body : Ceramic
- b . Internal conductor : Cu
- c . Terminal electrode : Ni-Cr/Ni/Sn
- d . Product weight : 0.3 mg (ref.)
- e . Products comply with RoHS' requirements
- f . Halogen free available.

III . General specification :

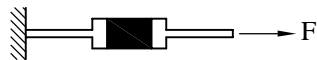
a . Storage Conditions :

Electrical Performance temp : -40°C ~ +85°C

Terminal Solderability & Packages Material temp : -10°C ---- +40°C and RH 70% max.

b . Operating temp. : -40°C ---- +85°C

c . Terminal strength :

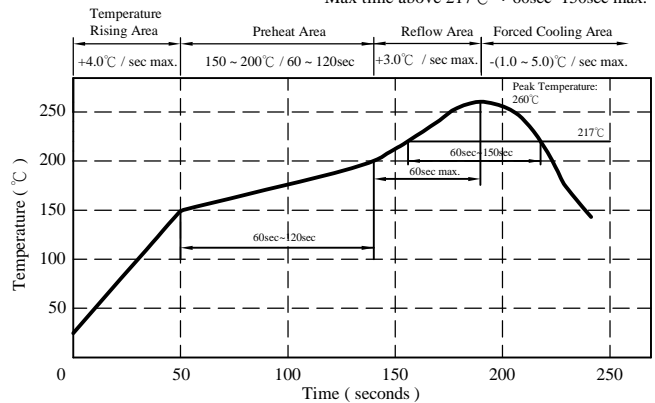


Type	F (kgf)	Time (sec)
AL0603	0.3	30±5

d . Resistance to soldering heat :

Solder temp. : 260°C
Dip time : 10 sec max.

Peak Temp : 260°C max.
Max. Peak Temp -5°C : 30sec max.
Max time above 217°C : 60sec~150sec max.



AR-001C

SPECIFICATION FOR APPROVAL

REF. :

PROD. NAME	Thin Film Chip Inductor	ABC'S DWG NO.	AL0603□□□□L□-□□□		
		REV.	20130610-B	PAGE	2

IV . Electrical characteristics :

DWG No.	Inductance (nH)	Tolerance	Q min.	Test Freq. (MHz)	SRF (GHz) min.	DC Resistance (Ω) max.	Rated Current (mA) max.
AL06031N0□L□-□□□	1.0	B、C、D	8	500	9	0.30	300
AL06031N1□L□-□□□	1.1	B、C、D	8	500	9	0.35	300
AL06031N2□L□-□□□	1.2	B、C、D	8	500	9	0.35	300
AL06031N3□L□-□□□	1.3	B、C、D	8	500	9	0.45	250
AL06031N4□L□-□□□	1.4	B、C、D	8	500	9	0.45	250
AL06031N5□L□-□□□	1.5	B、C、D	8	500	9	0.45	250
AL06031N6□L□-□□□	1.6	B、C、D	8	500	9	0.55	200
AL06031N7□L□-□□□	1.7	B、C、D	8	500	9	0.55	200
AL06031N8□L□-□□□	1.8	B、C、D	8	500	9	0.55	200
AL06031N9□L□-□□□	1.9	B、C、D	8	500	9	0.55	200
AL06032N0□L□-□□□	2.0	B、C、D	8	500	8	0.70	200
AL06032N1□L□-□□□	2.1	B、C、D	8	500	8	0.70	200
AL06032N2□L□-□□□	2.2	B、C、D	8	500	8	0.70	200
AL06032N3□L□-□□□	2.3	B、C、D	8	500	8	0.80	150
AL06032N4□L□-□□□	2.4	B、C、D	8	500	8	0.80	150
AL06032N5□L□-□□□	2.5	B、C、D	8	500	8	0.80	150
AL06032N6□L□-□□□	2.6	B、C、D	8	500	8	0.80	150
AL06032N7□L□-□□□	2.7	B、C、D	8	500	8	0.80	150
AL06032N8□L□-□□□	2.8	B、C、D	8	500	6	1.00	150
AL06032N9□L□-□□□	2.9	B、C、D	8	500	6	1.00	150
AL06033N0□L□-□□□	3.0	B、C、D	8	500	6	1.00	150
AL06033N1□L□-□□□	3.1	B、C、D	8	500	6	1.00	150
AL06033N2□L□-□□□	3.2	B、C、D	8	500	6	1.00	150
AL06033N3□L□-□□□	3.3	B、C、D	8	500	6	1.00	150
AL06033N4□L□-□□□	3.4	B、C、D	8	500	6	1.20	150
AL06033N5□L□-□□□	3.5	B、C、D	8	500	6	1.20	150
AL06033N6□L□-□□□	3.6	B、C、D	8	500	6	1.20	150
AL06033N7□L□-□□□	3.7	B、C、D	8	500	6	1.20	150
AL06033N9□L□-□□□	3.9	B、C、D	8	500	6	1.20	150
AL06034N7□L□-□□□	4.7	B、C、D	8	500	6	1.40	130
AL06035N6□L□-□□□	5.6	G、H、J	8	500	4	1.80	130
AL06036N8□L□-□□□	6.8	G、H、J	8	500	4	2.30	110
AL06038N2□L□-□□□	8.2	G、H、J	8	500	3	3.00	110
AL060310N□L□-□□□	10.0	G、H、J	8	500	2	3.50	80

- 1). □ : Packaging information : □ Code
- 2). "- □□□ " : Reference code
- 3). Electrical specifications at 25°C
- 4). Tolerance : B : ±0.1nH、C : ±0.2nH、D : ±0.3nH、G : ±2%、H : ±3%、J : ±5%

AR-001C



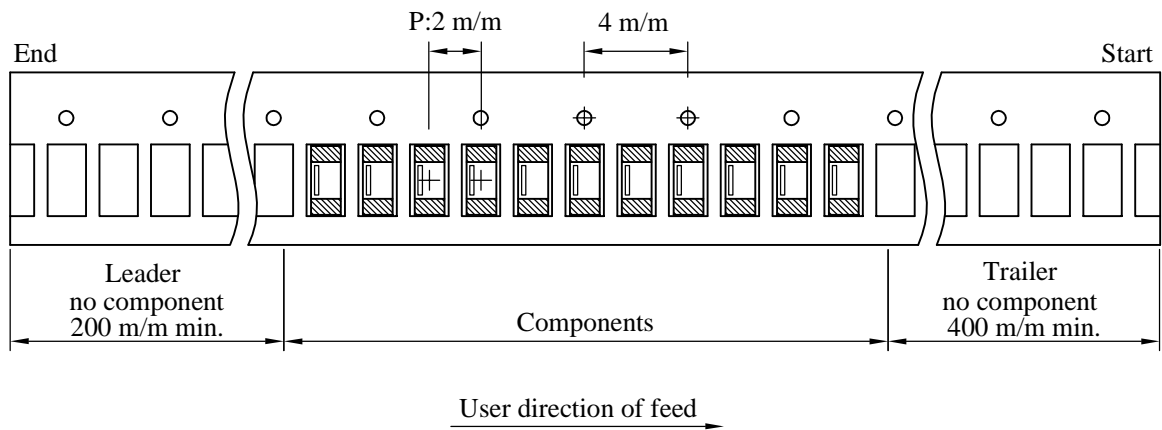
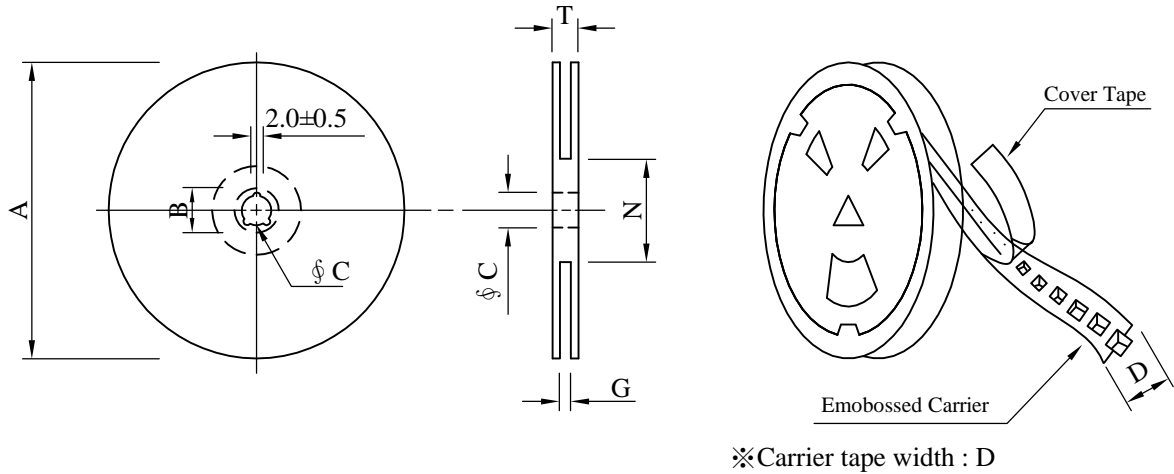
SPECIFICATION FOR APPROVAL

REF. :

PROD. NAME	Thin Film Chip Inductor	ABC'S DWG NO.	AL0603□□□□L□-□□□		
		REV.	20130610-B	PAGE	3

V . Packaging information :

(1) Configuration



(2) Dimensions

Unit:m/m

Style	A	B	C	D	G	N	T
07 - 08	178	21±0.8	13	8	10 ⁺⁰	50 ⁻⁰	12.5

(3) Q'TY & G.W. Per package

Code	Inner : Reel			Outer : Carton		
	Q'TY (pcs)	G.W. (gw)	Style	Q'TY (pcs)	G.W. (Kg)	Size (cm)
B	10,000	60	07 - 08	500,000	5.5	41x 39 x 22

AR-001C